

Monona

3 bedrooms | 2.5 bathrooms | 2,148sq ft



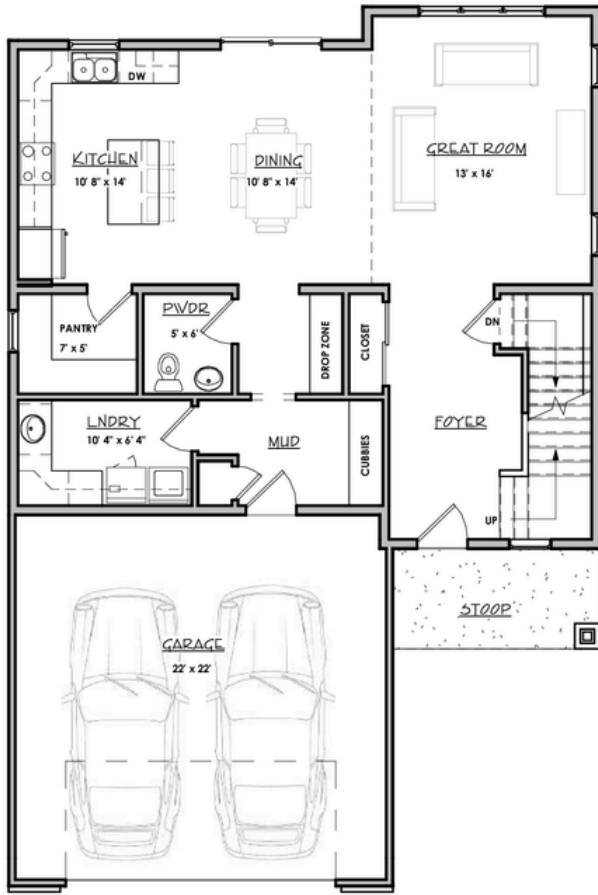
Modern



Craftsman

Open, inviting, efficient, impressive...and so much more! Whether you are having a quiet date night, hosting friends, starting a family, downsizing, or remote work, this house was built for you. With an interior packed with timeless amenities; this plan has it all!

First Floor

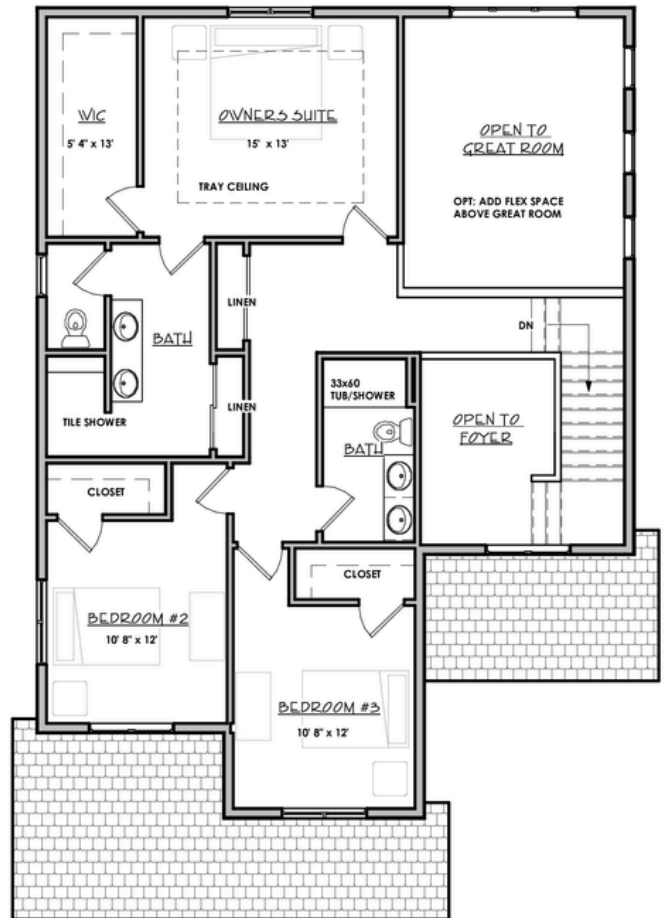


Floor Plan Features

- Open floor plan with spacious kitchen island and walk-in butler's pantry
- Quartz or granite kitchen counters
- Owner's Suite with attached private bath and separate toilet area
- Owner's Suite walk-in closet
- Owner's Suite tray ceiling
- Main floor mud & laundry room
- Full basement stubbed with full bath
- Additional storage space in garage
- 9 foot main floor and second floor ceilings

Optional Features

- Level 2 upgrades throughout
- Level 3 upgrades throughout
- Add 4th bedroom over great room
- Kitchen tile backsplash
- Level 1, 2, or 3 fireplace
- Basement window/s
- Fully finish garage
- Radon mitigation system
- Electric car port



Second Floor