

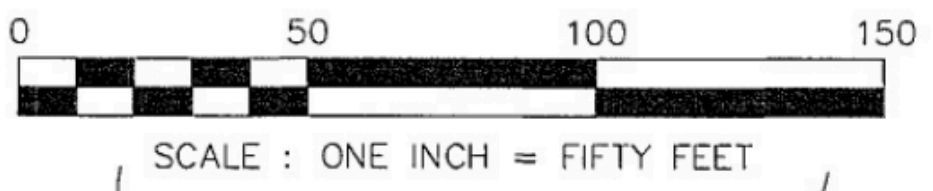
\*\* Elevations are approximate. Buyer to verify if important.

# INSPIRATION at Swan Creek

# INSPIRATION AT SWAN CREEK, A CONDOMINIUM PLAT

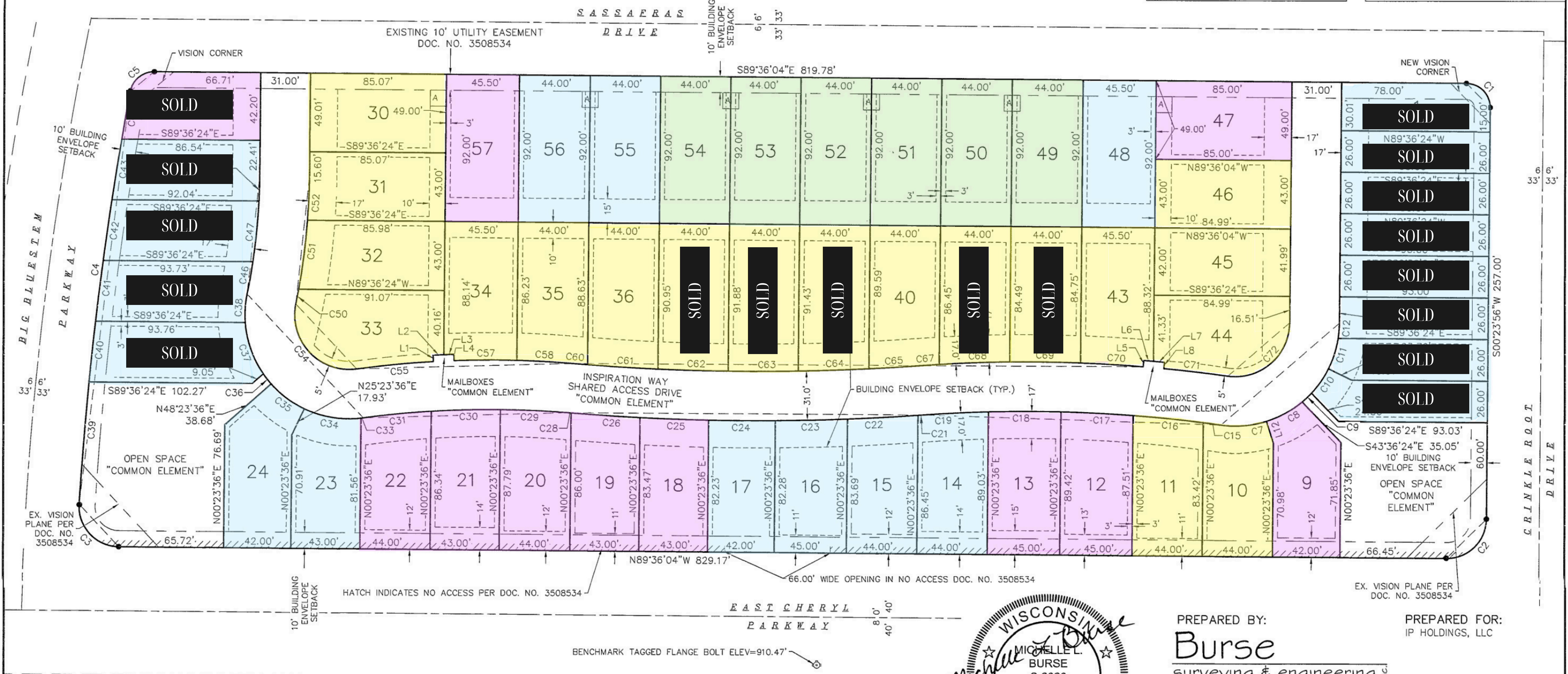
LOT 1, CERTIFIED SURVEY MAP NUMBER 13827, AS RECORDED IN VOLUME 91 OF CERTIFIED SURVEY MAPS, ON PAGES 271-273, AS DOCUMENT NUMBER 5104760, DANE COUNTY REGISTRY, LOCATED IN THE NORTHWEST QUARTER AND THE NORTHEAST QUARTER OF THE SOUTHWEST QUARTER OF SECTION 11, TOWNSHIP 06 NORTH, RANGE 09 EAST, CITY OF FITCHBURG, DANE COUNTY, WISCONSIN.

GRID NORTH  
BEARINGS ARE BASED UPON THE WISCONSIN COUNTY COORDINATE SYSTEM (DANE ZONE 83 1997) THE SOUTH LINE OF THE SOUTHWEST QUARTER BEARS S88°02'52"E



There are no objections to this condominium with respect to Sec. 703 Wis. Stats. and is hereby approved for recording.  
Dated this 12 day of Nov, 2024  
Dane County Planning and Development

Office of the Register of Deeds  
Dane County, Wisconsin  
Received for Record  
November 12, 2024 at 12:24 o'clock P.M. as Document No. 5995696 in vol. 8-043B of Condo Plats, Pgs 1-3  
Kristi Chlebowicki by: Lisa Stafford Sety, Deputy Register of Deeds



- NOTES:**
- 1) Unless otherwise noted, everything outside of the Unit Boundaries are common elements.
  - 2) See sheet 2 for Legend, Line Table, Curve Table, Unit Area Table, Minimum Basement Floor Elevations Table and Lowest Opening for Units 8, 9, 24 and 25.
  - 3) No grinder pumps allowed.
  - 4) See sheet 3 for spot elevations and drainage arrows.



PREPARED BY:  
**Burse**  
surveying & engineering llc  
2801 International Lane, Suite 101  
Madison, WI 53704 608.250.9263  
Fax: 608.250.9266  
email: mburse@bse-inc.net  
www.bursesurveyengr.com

PREPARED FOR:  
IP HOLDINGS, LLC  
SHEET 1 OF 3  
Date: November 06, 2024  
Plot View: CONDO  
\\BSE1691\CONDO\dwg\BSE1691CONDOv20.dwg

Foundation Wall Exposure: Limited (0'-2') Semi-Partial (2'-3') Partial (3'-5') Half + (5'-6')

# INSPIRATION AT SWAN CREEK, A CONDOMINIUM PLAT

LOT 1, CERTIFIED SURVEY MAP NUMBER 13827, AS RECORDED IN VOLUME 91 OF CERTIFIED SURVEY MAPS, ON PAGES 271-273, AS DOCUMENT NUMBER 5104760, DANE COUNTY REGISTRY, LOCATED IN THE NORTHWEST QUARTER AND THE NORTHEAST QUARTER OF THE SOUTHWEST QUARTER OF SECTION 11, TOWNSHIP 06 NORTH, RANGE 09 EAST, CITY OF FITCHBURG, DANE COUNTY, WISCONSIN.

There are no objections to this condominium with respect to Sec. 703 Wis. Stats. and is hereby approved for recording.

Dated this 12 day of Nov, 2024

Dane County Planning and Development

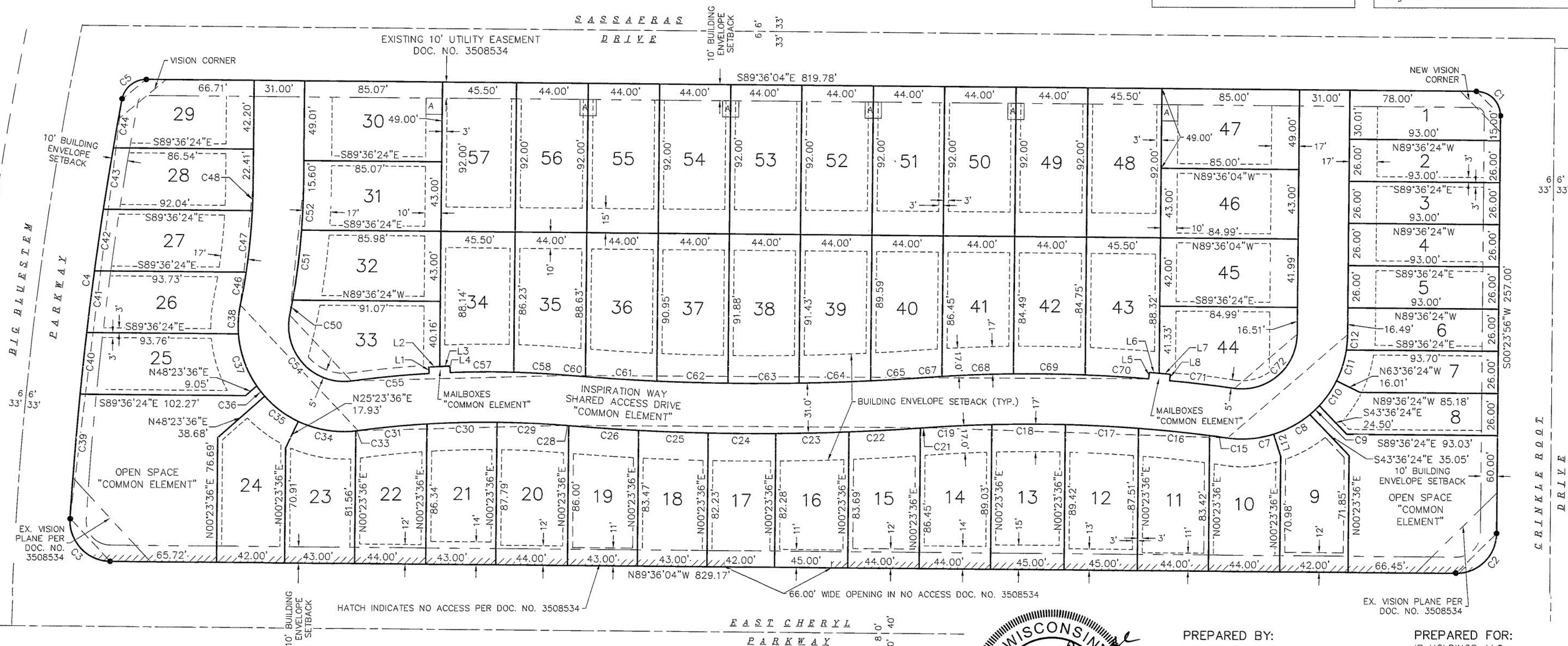
Office of the Register of Deeds  
Dane County, Wisconsin  
Received for Record  
November 12, 2024 at  
12:24 o'clock P.M. as  
Document No. 5995696  
in vol. 8-043B of  
Condo Plats, Pgs 1-3

Krist Chlebowski by:  
Lisa Stafford-Saty, Deputy  
Register of Deeds

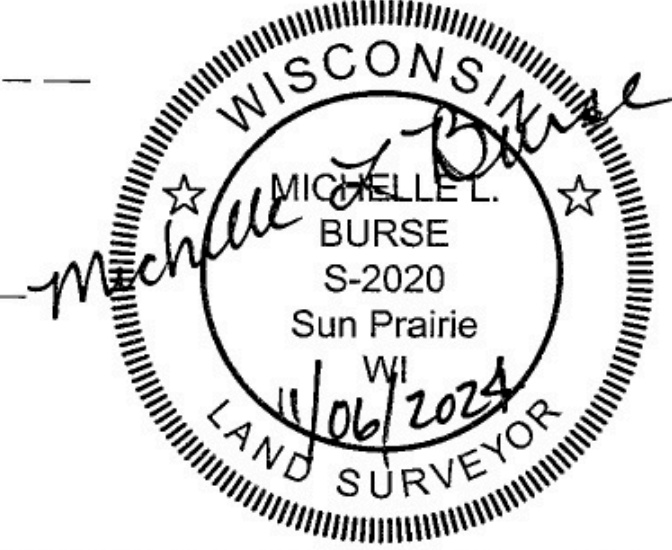


SCALE: ONE INCH = FIFTY FEET

SECOND ADDITION TO SWAN CREEK OF NINE SPRINGS



- NOTES:**
- 1) Unless otherwise noted, everything outside of the Unit Boundaries are common elements.
  - 2) See sheet 2 for Legend, Line Table, Curve Table, Unit Area Table, Minimum Basement Floor Elevations Table and Lowest Opening for Units 8, 9, 24 and 25.
  - 3) No grinder pumps allowed.
  - 4) See sheet 3 for spot elevations and drainage arrows.



PREPARED BY:  
**Burse**  
surveying & engineering inc  
2801 International Lane, Suite 101  
Madison, WI 53704 608.250.9263  
Fax: 608.250.9266  
email: mburse@bse-inc.net  
www.bursesurveyengr.com

PREPARED FOR:  
IP HOLDINGS, LLC  
SHEET 1 OF 3  
Date: November 06, 2024  
Plot View: CONDO  
\\BSE1691\CONDO\dwg\BSE1691CONDOv20.dwg